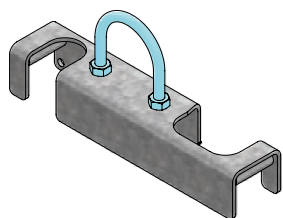


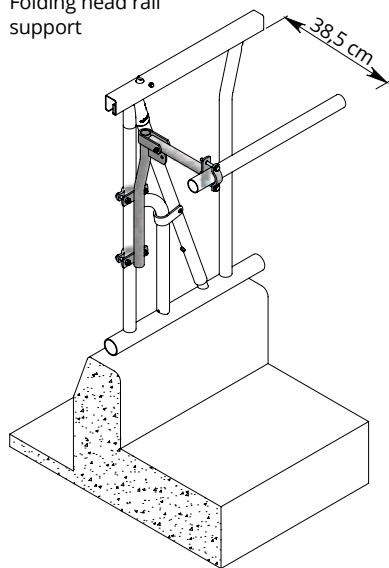
<p>02.92.100 22.92.680 22.92.500</p>	<p>Operating handle For central locking of self-locking feed front.</p> <p>Type of self-locking feed front Swedish Hidden locking types A feed front with a maximum length of 30 m can be operated with one handle. Safety feed front A feed front with a maximum length of 20 m can be operated with one handle.</p>
<p>02.90.180 02.90.190 02.90.285 02.90.585 02.90.380 02.90.880 02.91.100 02.90.010 02.90.015 02.90.020 02.90.030 02.90.035 02.90.050</p>	<p>Hinge assembly A hinge assembly consists of a set of feed front fasteners 0-5/76 mm, a hinge bar, 2 hangers and a set of locking points. When ordering a hinge assembly for self-locking or safety feed fronts an operating handle is included.</p> <p>Type of feed front Diagonal Tombstone Self-locking with hidden locking Limo self-locking Swedish self-locking Safety feed front</p> <p>Hinge assembly, separate components Set of feed front fasteners 0-5/76 mm Hinge pin 100 cm Hinge pin 125 cm Hanger to 48 mm Hanger to 60 mm Hanger to 60 mm Set of locking points</p>
<p>02.90.950 02.90.960 02.90.950 02.90.950 02.90.960 02.90.975 02.90.950</p>	<p>Castor wheel Usually mounted onto gates longer than 2 m, fastening plate and threaded strap included.</p> <p>Type of feed front Diagonal Tombstone (22.21 and 22.22) Tombstone (22.24 and 22.25) Self-locking with hidden locking (24.61 - 24.65) Limo self-locking (24.66) Safety feed front Swedish self-locking</p>



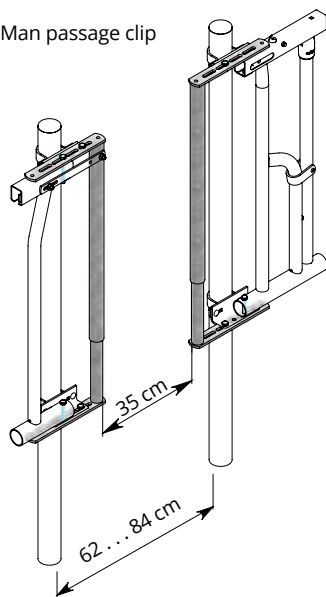
Indivast for self locking feed front



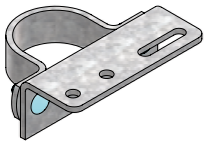
Folding head rail support



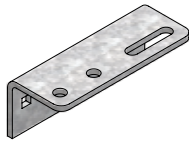
Man passage clip



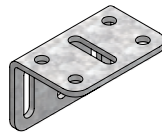
	<p>Individual locking 'Indivast'</p> <p>Indivast allows you to individually secure the cows in the feed front. That simplifies insemination procedures or other treatments. The Indivast has two recesses in the metal that is clamped around the catching bar and the frame. Locking is simply done by placing the Indivast at an angle perpendicular to the lower bar in the feed front and then twisting it a quarter of a turn, after which a little force is used to press it to the bottom of the feed front. It will then rest horizontally on the lower bar.</p> <p>22.92.650 Indivast for self locking feed front 22.61 / 22.62 / 24.61 / 24.62 / 24.63</p> <p>22.92.660 Indivast for self locking feed front 24.66</p> <p>22.92.750 Indivast for safety feed front 22.72 / 23.71</p>
<p>02.94.100 10.15.600</p>	<p>Folding head rail support</p> <p>A folding head rail prevents the animals from wasting feed. The head rail does not take space away from the feed alley, because of the folding mechanism. Can be mounted to self-locking and safety feed fronts. A length of tubing of 6 m. requires a minimum of 2 head rail supports.</p> <p>Head rail support, clamps included Tube 48 mm, length 6 m</p>
<p>02.93.100</p>	<p>Man passage clip</p> <p>To create a handy passage in a row of feed front sections. Suitable for all types of feed fronts, for young stock, heifers and cows. Two adjustable passage clips are shown.</p> <p>Man passage clip</p>



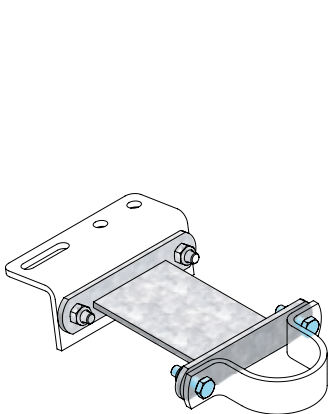
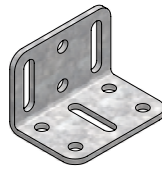
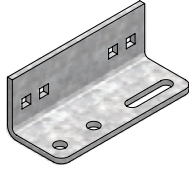
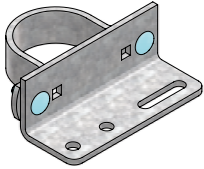
Set of feed front fasteners for mounting to support post



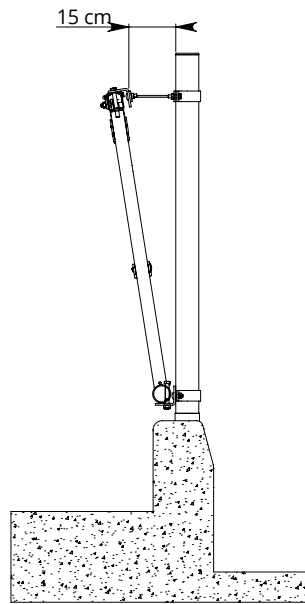
Set of feed front fasteners for mounting to barn posts or wall



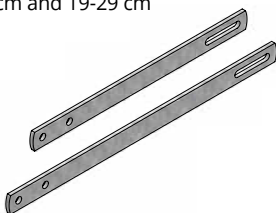
Feed front fasteners for mounting between barn posts



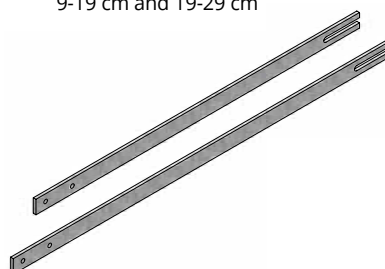
Universel spacer



Connecting strip for self-locking feed front 9-19 cm and 19-29 cm



Connecting strip for safety feed front 9-19 cm and 19-29 cm



Set of feed front fasteners

With our universal fasteners the length of every feed front section can be increased by up to 20 cm.

- 02.91.100
- 02.91.200
- 02.91.300

For support post 76 mm
0 - 5 cm
5 - 10 cm
10 - 20 cm

- 02.91.120
- 02.91.220
- 02.91.320

For support post 89 mm
0 - 5 cm
5 - 10 cm
10 - 20 cm

- 02.91.180
- 02.91.280
- 02.91.380

For support post \varnothing 80 mm
0 - 5 cm
5 - 10 cm
10 - 20 cm

- 02.91.135
- 02.91.235
- 02.91.335

For mounting to barn posts
0 - 5 cm
5 - 10 cm
10 - 20 cm

- 02.91.605
- 02.91.615
- 02.91.625

Complete set of feed front fasteners (4 angle pieces) for mounting 1 feed front between barn posts
0 - 7 cm
5 - 12 cm
10 - 17 cm

Universal spacer

With our universal spacer the feed front can be placed in an inclined position. In this way larger animals do not lean against the upper part of the barrier with their necks when they are eating.

- 02.91.800

Universal spacer 15 cm, with bolts

Connecting strips

Included with our self-locking feed fronts are connecting strips of 0-9 cm. If the spacing between two feed fronts is bigger than 9 cm, longer connecting strips need to be ordered.

- 02.22.030
- 02.22.031
- 02.22.032

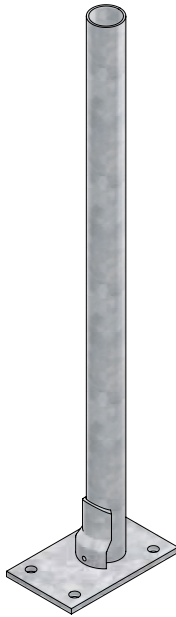
Connecting strip for self-locking feed front
0 - 9 cm (standard at each feed front)
9 - 19 cm
19 - 29 cm

- 24.72.030
- 24.72.031
- 24.72.032

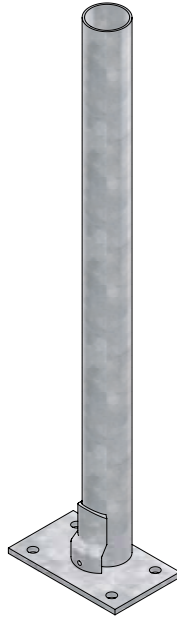
Connecting strip for safety feed front
0 - 9 cm (standard at each feed front)
9 - 19 cm
19 - 29 cm



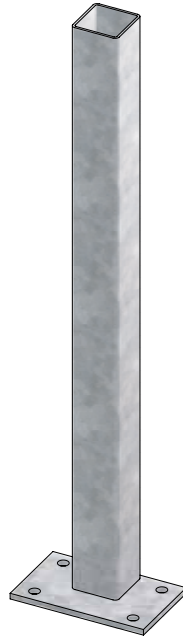
Support post, to be set in concrete



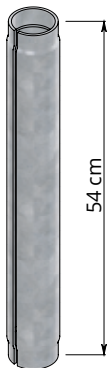
Floor-mounted support post 60 mm



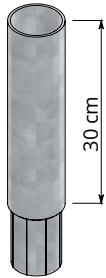
Floor-mounted support post 76 mm and 89 mm



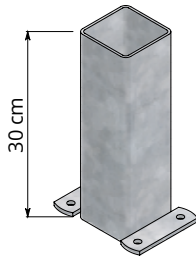
Floor-mounted support post ∇ 80 mm



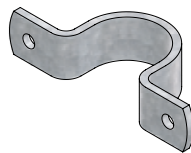
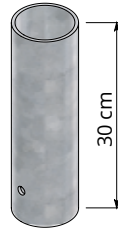
Expansion tube for post repair



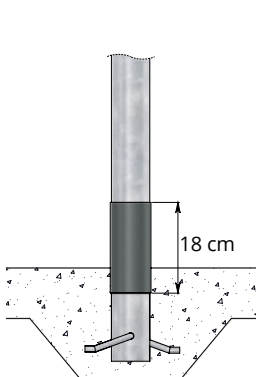
Extension for support post



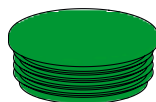
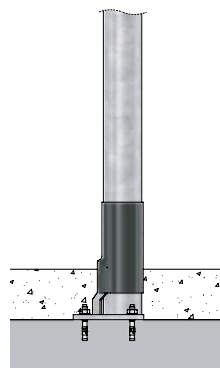
Metal sleeve



Mounting clip



Plastic protective sleeve



Stopper

	Support post, to be set in concrete
	Size
10.25.140	76 mm x 140 cm
10.25.160	76 mm x 160 cm
10.25.180	76 mm x 180 cm
10.25.200	76 mm x 200 cm
10.30.200	89 mm x 200 cm
10.80.180	∇ 80 x 180 cm
	Floor-mounted support post
	Size
10.21.120	60 mm x 120 cm
10.21.140	60 mm x 140 cm
10.26.100	76 mm x 100 cm
10.26.120	76 mm x 120 cm
10.26.130	76 mm x 130 cm
10.26.145	76 mm x 145 cm
10.26.160	76 mm x 160 cm
10.26.170	76 mm x 170 cm
10.26.180	76 mm x 180 cm
10.31.160	89 mm x 160 cm
10.31.180	89 mm x 180 cm
10.81.160	∇ 80 x 160 cm
10.81.180	∇ 80 x 180 cm
	Expansion tube for post repair
10.25.950	Expansion \varnothing 70 mm x 54 cm. For the repair of 76 mm support posts in concrete.
	Extension for support post
10.25.910	Extension \varnothing 76 mm x 30 cm. To be used where existing support posts are not high enough because of renovation.
	Metal sleeve
	Especially for removable support posts.
10.30.030	For support post 76 mm
10.30.090	For support post ∇ 80 mm
	Mounting clip
	For mounting wooden boards to support posts.
	Size
04.18.010	34 mm
04.18.015	48 mm
04.18.020	60 mm
04.18.025	76 mm
04.18.030	89 mm
04.18.050	102 mm
04.18.055	108 mm
04.18.040	114 mm
04.18.060	∇ 60 x 60 mm
04.18.080	∇ 80 x 80 mm
04.18.110	∇ 80 x 120 mm
	Plastic protective sleeve
	Length 18 cm
11.02.200	60 mm
11.02.250	76 mm
11.02.300	89 mm
11.02.800	∇ 80 mm
11.02.260	Plastic protective sleeve for floor-mounted support post 76 mm
	Stopper
	Size
11.06.200	60 mm
11.06.250	76 mm
11.06.300	89 mm
11.06.800	∇ 80 mm